

**Anti-CD181 Antibody**  
Rabbit polyclonal antibody to CD181  
Catalog # AP59928

### Specification

---

#### Anti-CD181 Antibody - Product Information

Application	WB
Primary Accession	<a href="#">P25024</a>
Other Accession	<a href="#">Q810W6</a>
Reactivity	Human, Mouse, Rat
Host	Rabbit
Clonality	Polyclonal
Calculated MW	39791

#### Anti-CD181 Antibody - Additional Information

Gene ID 3577

#### Other Names

CMKAR1; IL8RA; C-X-C chemokine receptor type 1; CXC-R1; CXCR-1; CDw128a; High affinity interleukin-8 receptor A; IL-8R A; IL-8 receptor type 1; CD181

#### Target/Specificity

Recognizes endogenous levels of CD181 protein.

#### Dilution

WB~~WB (1/500 - 1/1000)

#### Format

Liquid in 0.42% Potassium phosphate, 0.87% Sodium chloride, pH 7.3, 30% glycerol, and 0.09% (W/V) sodium azide.

#### Storage

Store at -20 °C. Stable for 12 months from date of receipt

#### Anti-CD181 Antibody - Protein Information

Name CXCR1

Synonyms CMKAR1, IL8RA

#### Function

Receptor to interleukin-8, which is a powerful neutrophils chemotactic factor (PubMed: [1840701](http://www.uniprot.org/citations/1840701)). Binding of IL-8 to the receptor causes activation of neutrophils. This response is mediated via a G- protein that activates a phosphatidylinositol-calcium second messenger system (PubMed: [8662698](http://www.uniprot.org/citations/8662698)).

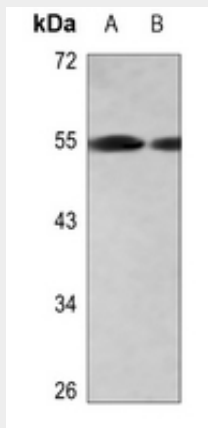
**Cellular Location**

Cell membrane; Multi-pass membrane protein.

**Anti-CD181 Antibody - Protocols**

Provided below are standard protocols that you may find useful for product applications.

- [Western Blot](#)
- [Blocking Peptides](#)
- [Dot Blot](#)
- [Immunohistochemistry](#)
- [Immunofluorescence](#)
- [Immunoprecipitation](#)
- [Flow Cytometry](#)
- [Cell Culture](#)

**Anti-CD181 Antibody - Images**

Western blot analysis of CD181 expression in HEK293T (A), A549 (B) whole cell lysates.

**Anti-CD181 Antibody - Background**

KLH-conjugated synthetic peptide encompassing a sequence within the center region of human CD181. The exact sequence is proprietary.